



2 DYNELEY HALL LEEDS ROAD BRAMHOPE, LS16 9BQ

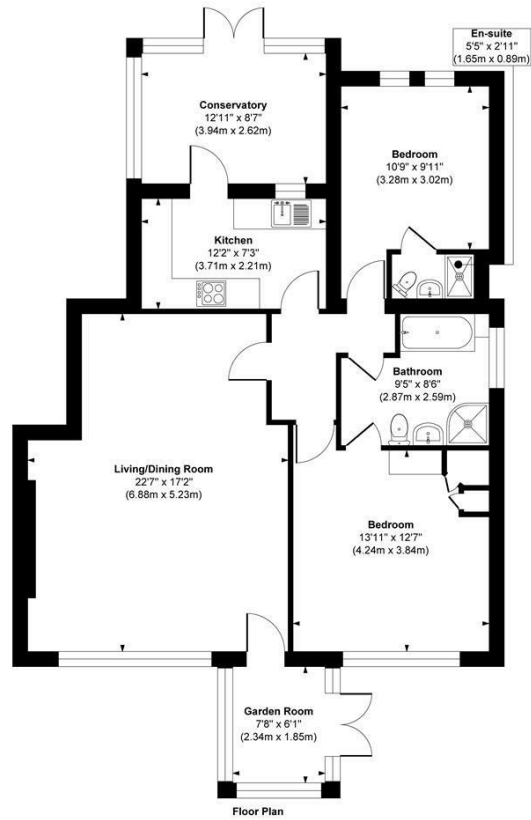
£450,000
FREEHOLD

Monroe is delighted to present this well-appointed property at Dyneley Hall, Bramhope. Offering a generous gross internal floor area, this home is perfectly designed for modern living, blending spacious social areas with private, restful retreats.

MONROE

SELLERS OF THE FINEST HOMES

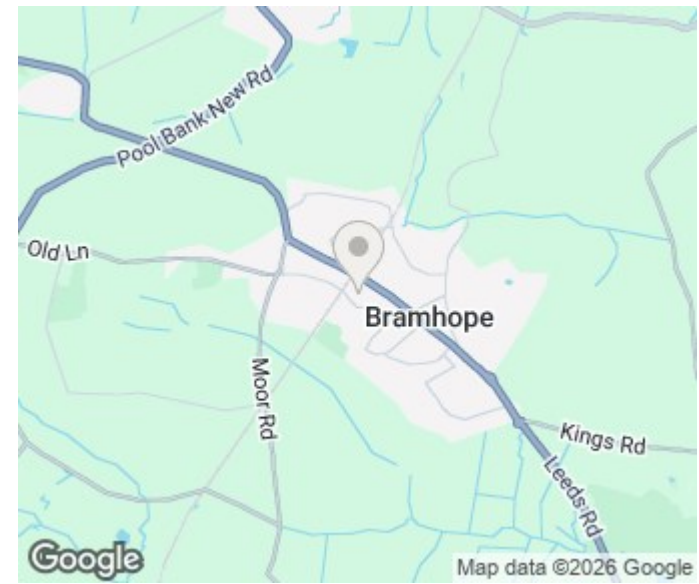
Dyneley Hall, Bramhope



Approx. Gross Internal Floor Area 1065 sq. ft / 98.94 sq. m

Illustration for identification purposes only, measurements are approximate, not to scale.

Copyright © Show Home.



Energy Efficiency Rating		Current	Potential
Very energy efficient - lower running costs			
(92 plus) A			
(81-91) B			
(69-80) C			78
(55-68) D	67		
(39-54) E			
(21-38) F			
(1-20) G			
Not energy efficient - higher running costs			
England & Wales		EU Directive 2002/91/EC	

Agents Note: Whilst every care has been taken to prepare these particulars, they are for guidance purposes only. All measurements are approximate and are for general guidance purposes only and whilst every care has been taken to ensure their accuracy, they should not be relied upon and potential buyers/tenants are advised to recheck the measurements

Alwoodley Sales
716 King Lane Alwoodley
Leeds
West Yorkshire
LS17 7BA

0113 870 4443
hello@monroestateagents.com
www.monroestateagents.com

MONROE

SELLERS OF THE FINEST HOMES